

Appendix B – North Additional Information

Direct Energy Regulated Services
August 2008 GCFR

June Data

Figure 1 – Daily Price Data

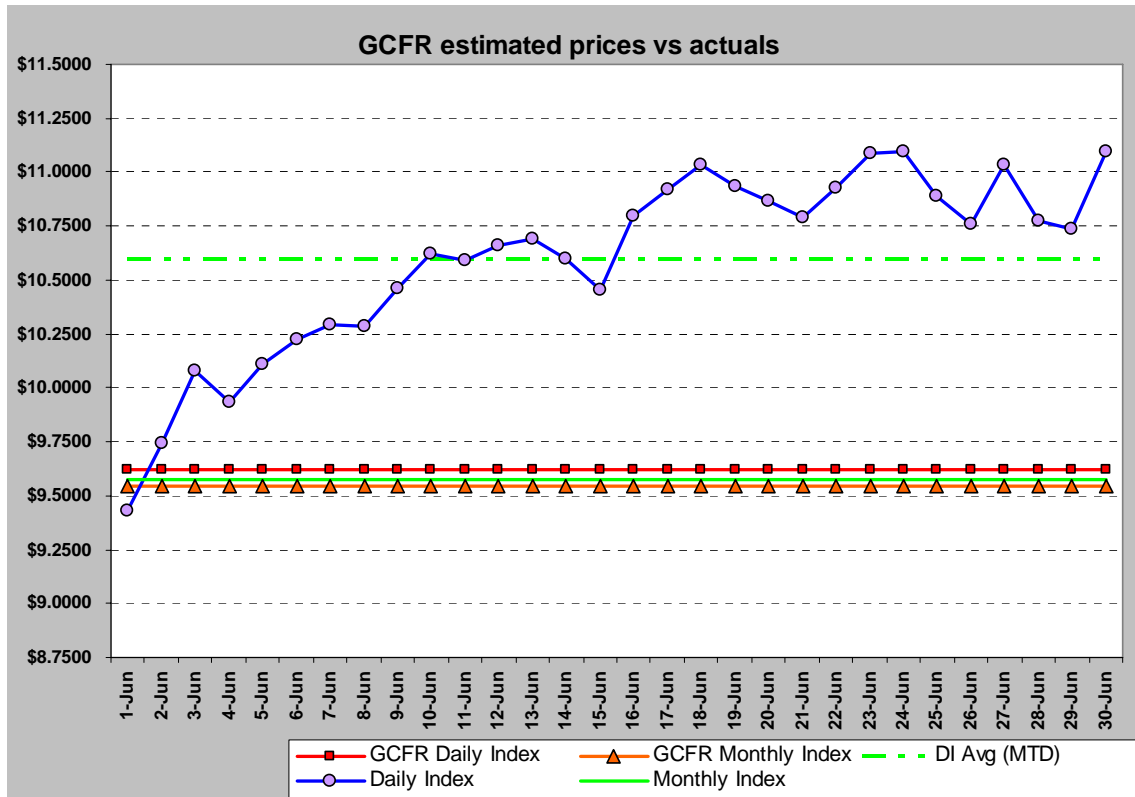


Table 1 – Price Comparison (June)

	June GCFR	Actual	Difference
MI	\$9.5466	\$9.5781	\$0.031
DI Average	\$9.6175	\$10.5967	\$0.979

Figure 1 shows the difference in the actual daily and monthly index prices and the forecast daily and monthly prices that were included in the June GCFR. Figure 2 below shows the actual temperature during the month of June for Edmonton.

Figure 2 – Daily Weather Data (Edmonton)

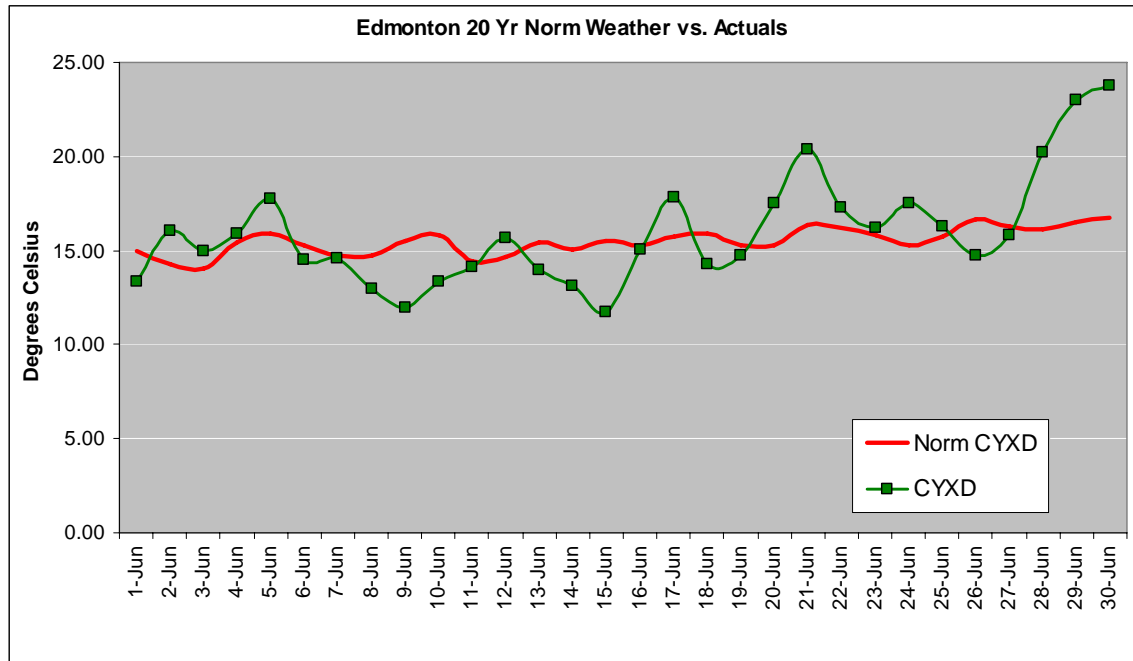


Figure 3 – North Supply Purchases (TJ)

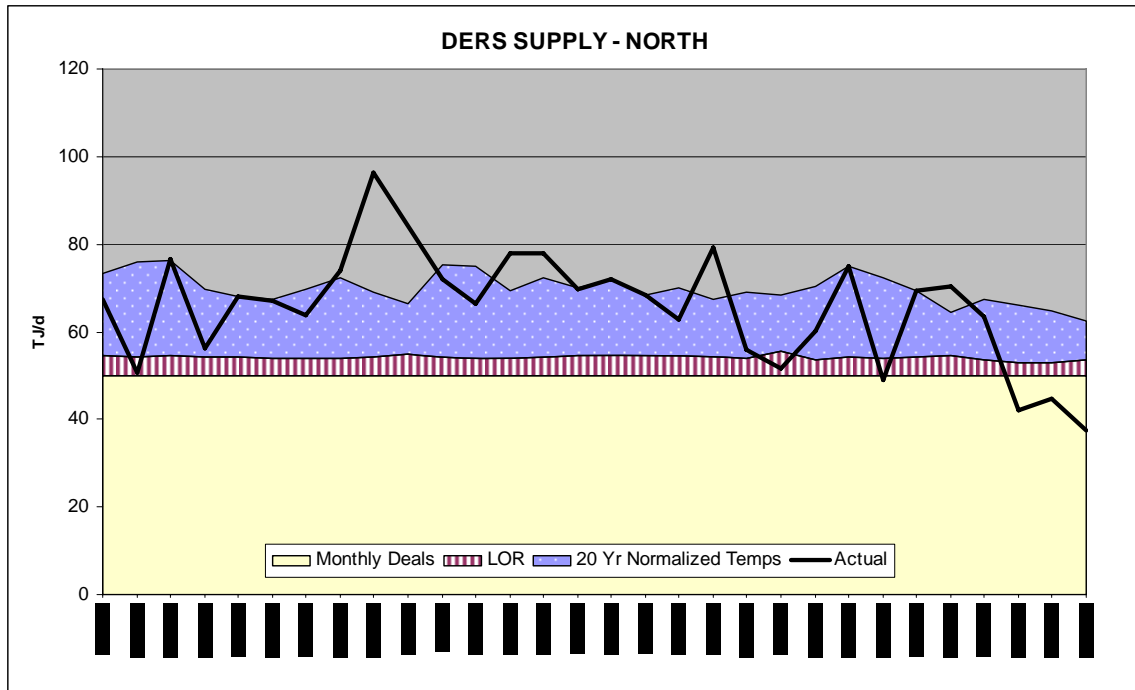
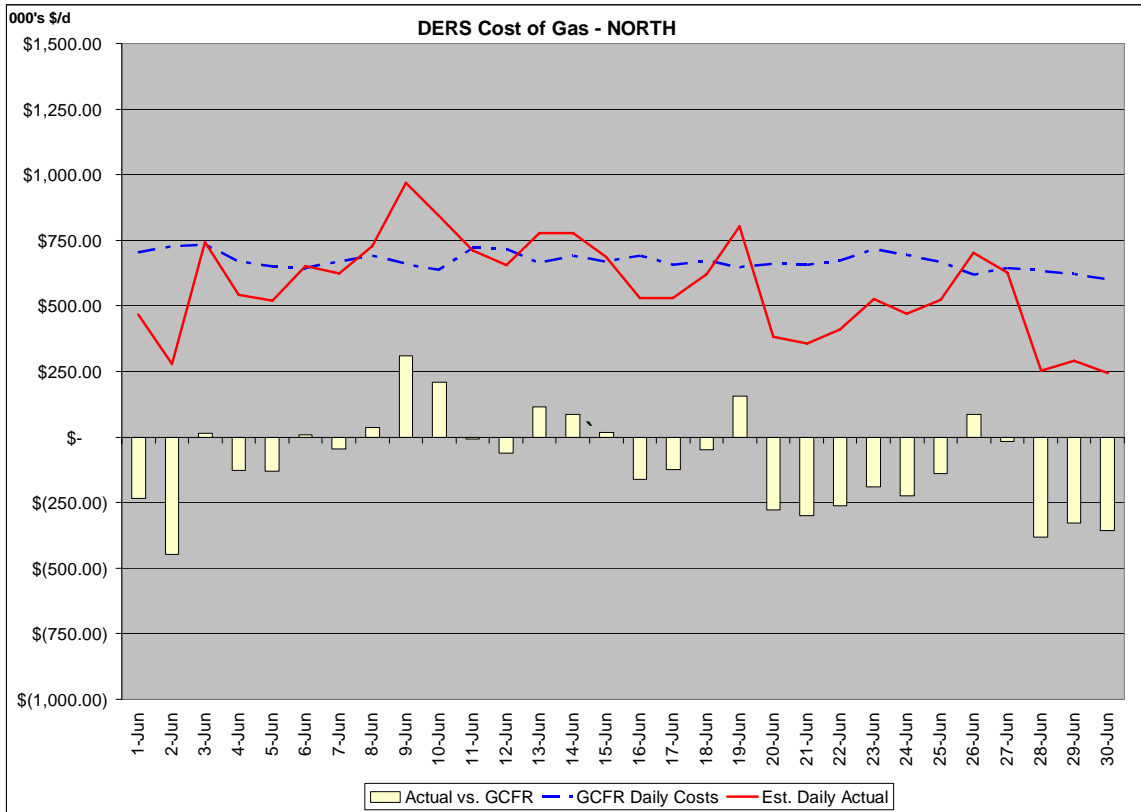


Table 2 – June Purchases (TJ)

June Totals (TJ)		Schedule Reference
Monthly	1,500	
Life of Reserve	125	
20 yr normal	272	
Actual	(180)	
Core and LB	53	
Total (August GCFR)	1,770	August GCFR (M-2 column B (Line 1 minus Line 9))
June GCFR	2,037	June GCFR (M-2 column D (line 1))
Difference	(267)	August GCFR line minus June GCFR line

Figure 4 – North Purchases (\$'000)



Please note that the estimated actuals for the current month is a "net" estimate. This number is the sum of current month purchases plus storage minus excess system sales.

Table 3 – June Purchases (\$'000)

June Purchases Total (\$'000)		Schedule References
June GCFR Forecast	\$20,058	June GCFR (M-1 Column E (line 2 minus line 16))
August GCFR Forecast	\$17,244	August GCFR (M-1 Column C (line 2 minus line 16))
Difference	\$2,814	August GCFR line minus June GCFR line

North Calendar Sales (\$'000)

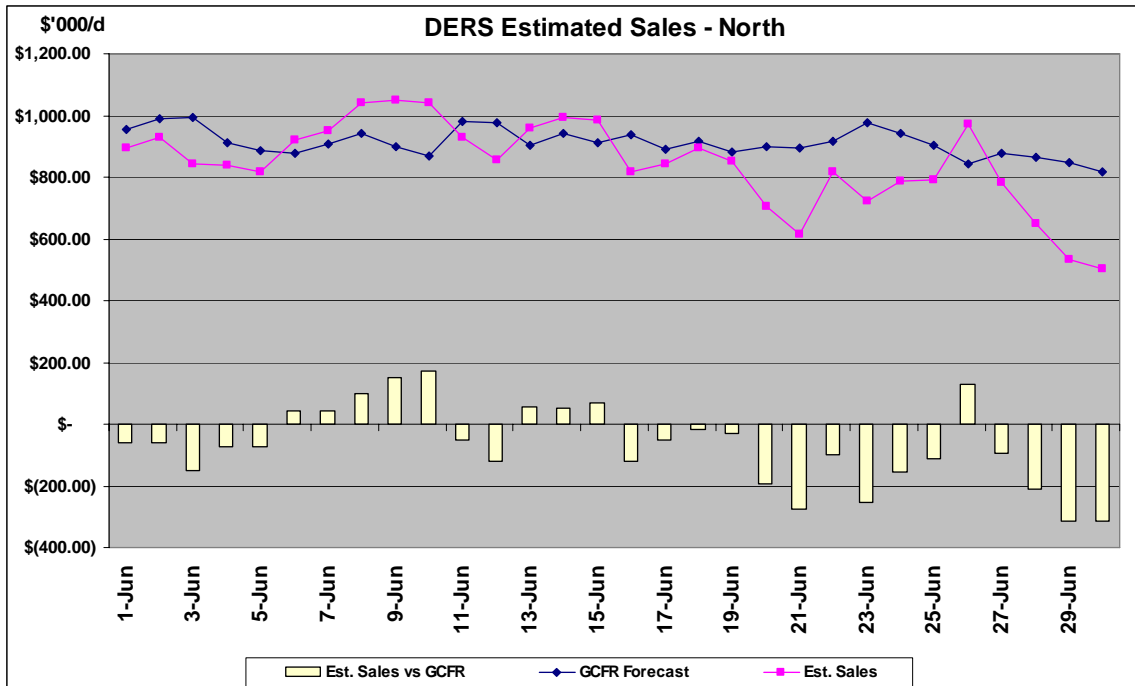


Table 4 – June Sales (\$'000)

June Sales Total (\$'000)		Schedule References
June GCFR Forecast	\$27,249	June GCFR (M-1 Column E (line 14))
August GCFR Forecast	\$25,841	August GCFR (M-1 Column C (line 14))
Difference	\$1,408	August GCFR line minus June GCFR line

The chart below shows the cost of gas and calendar sales for the month of June as reported in the June and August GCFR.

Table 5 – Variance in June and August GCFR for June Calendar Month Purchases and Sales (\$'000)

	June GCFR	August GCFR	Table References
June Sales	\$27,249	\$25,841	Table 4
June Purchases	\$20,058	\$17,244	Table 3
Difference	\$7,191	\$8,597	Sales minus Purchases

Note: The data shown in Figures 1 through 4 have been taken as of July 25th, and represents information available to DERS at the time. Numbers may be slightly off as a result of rounding differences.

July Data

Figure 6 – Daily Price Data

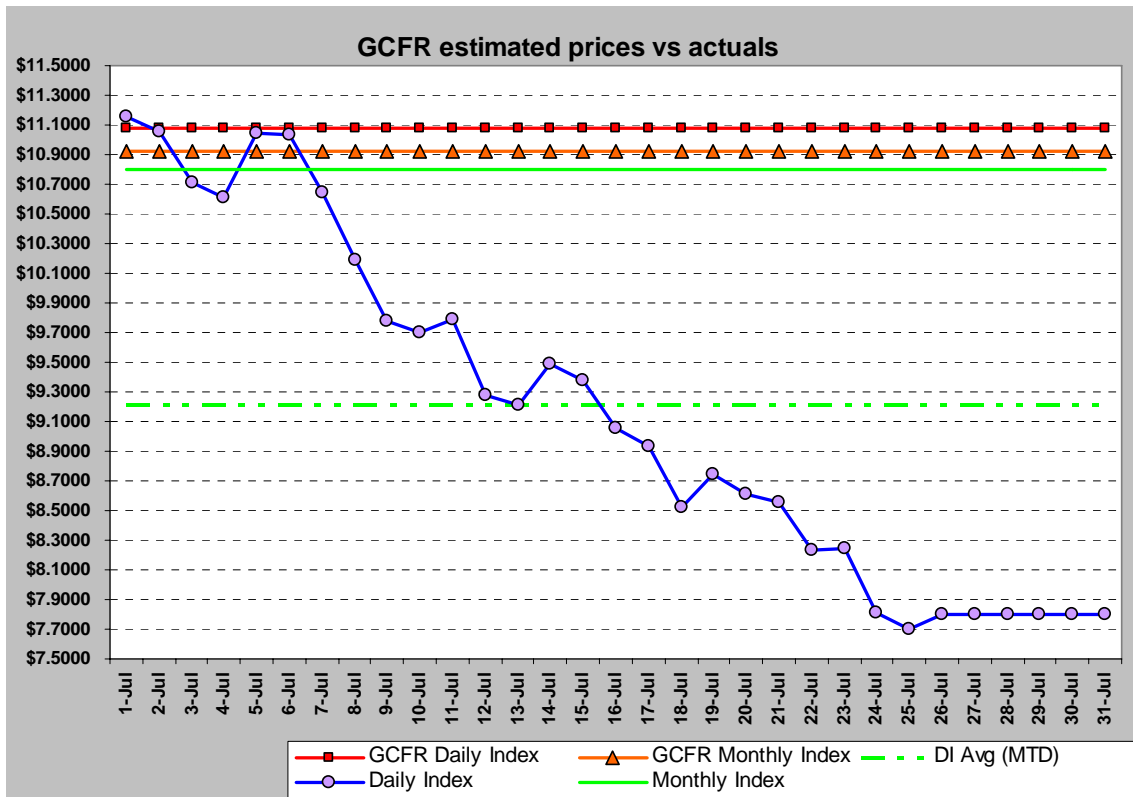


Table 6 – Price Comparison (July)

	July GCFR	Actual	Difference
MI	\$10.9227	\$10.7996	(\$0.123)
DI Average	\$11.0745	\$9.2157	(\$1.859)

Figure 6 shows the difference in the actual daily and monthly index prices and the forecast daily and monthly prices that were included in the July GCFR. Figure 7 below shows the actual temperature during the month of July for Edmonton.

Figure 7 – Daily Weather Data Edmonton

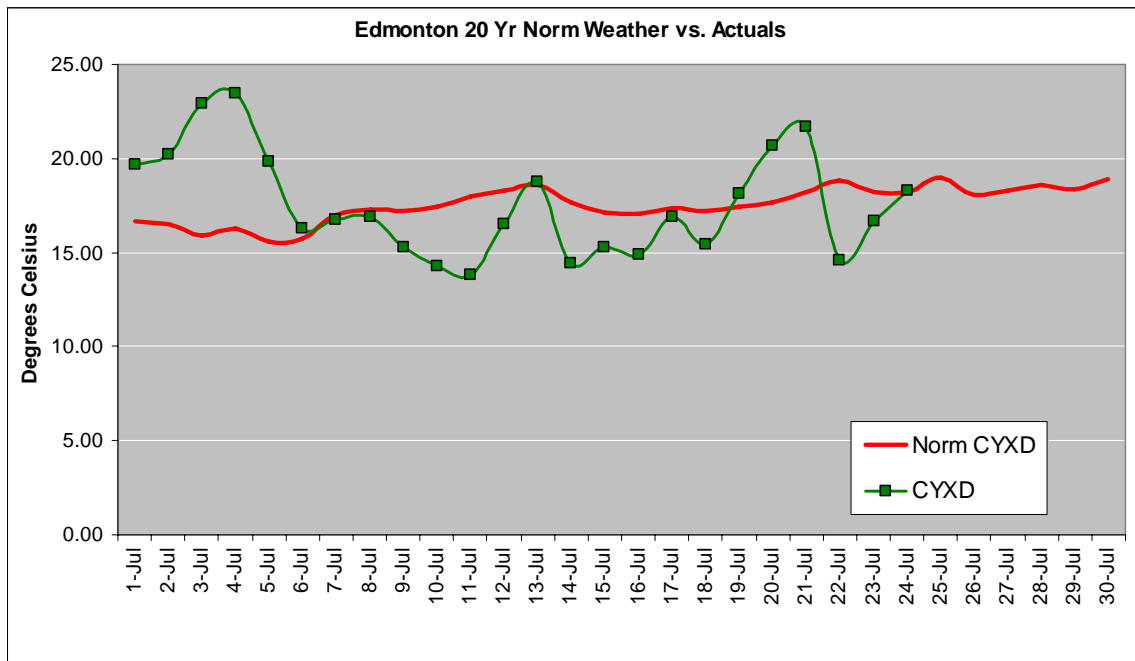


Figure 8 – North Supply Purchases (TJ)

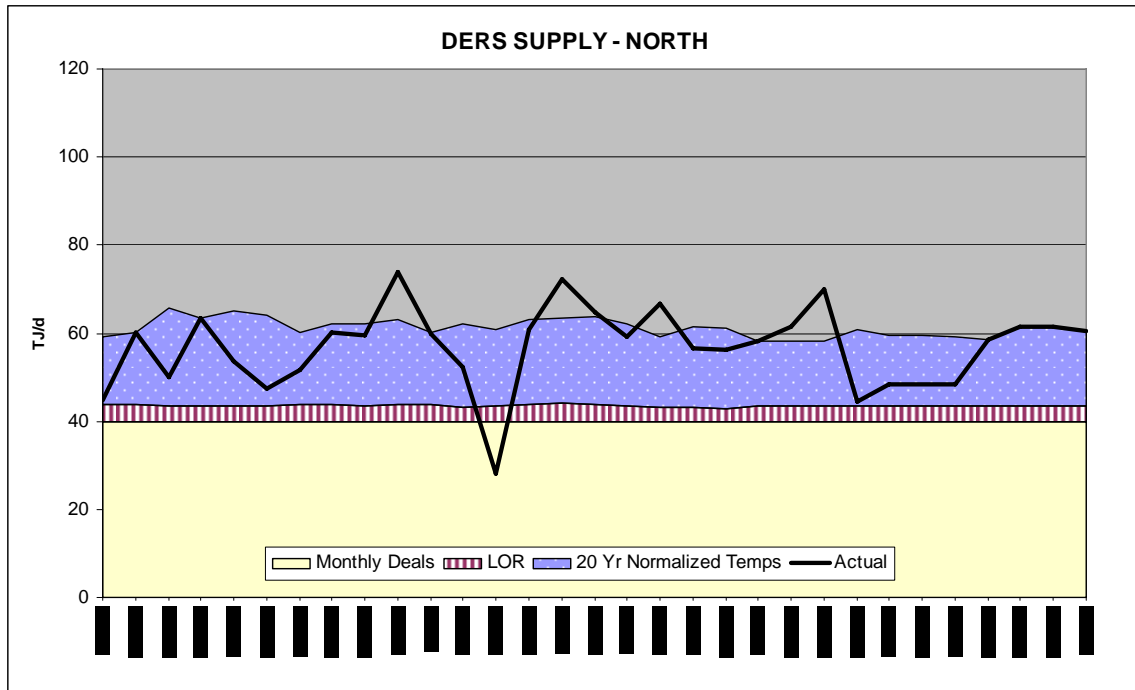
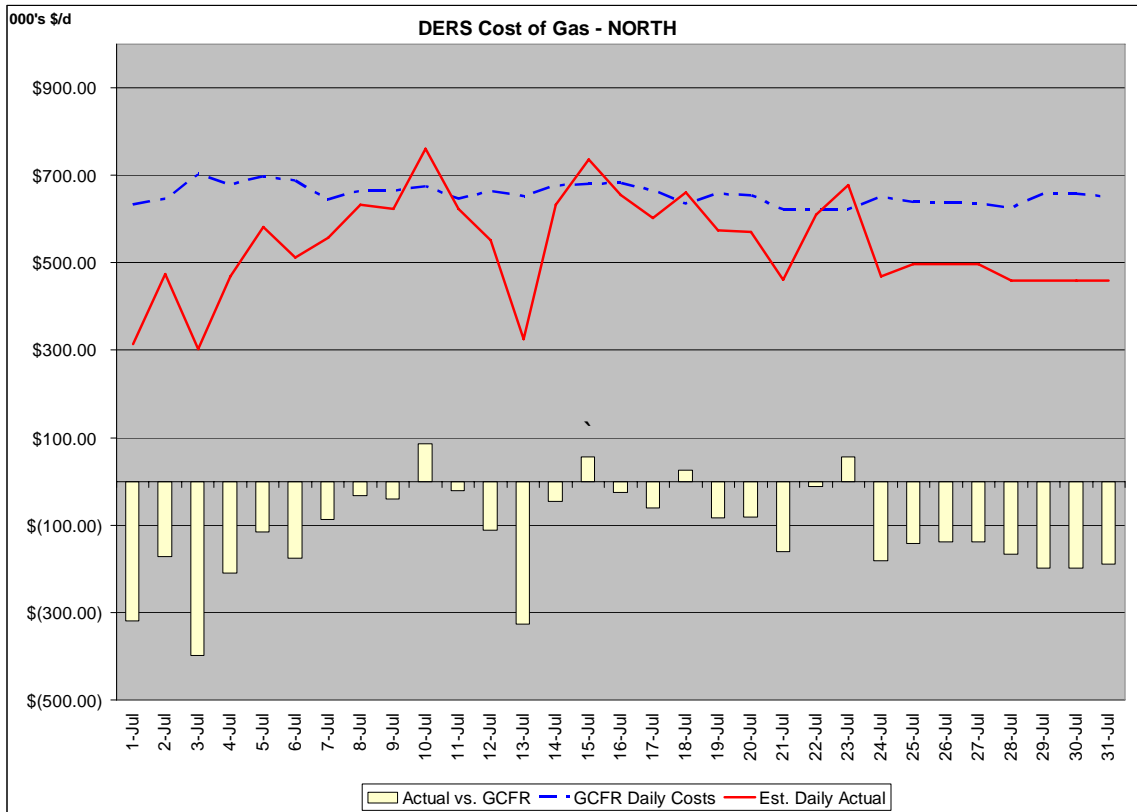


Table 7 – July Purchases (TJ)

July Totals (TJ)		Schedule Reference
Monthly	1,240	
Life of Reserve	108	
20 yr normal	506	
Actual	(84)	
LB	(52)	
Total (August GCFR)	1,719	August GCFR (M-2 column C (Line 1 - Line 9))
July GCFR	1,902	July GCFR (M-2 column D (line 1))
Difference	(183)	August GCFR line minus July GCFR line

Figure 9 – North Purchases (\$'000)



Please note that the estimated actuals for the current month is a "net" estimate. This number is the sum of current month purchases plus storage minus excess system sales.

Table 8 – July Purchases (\$'000)

July Purchases Total (\$'000)		Schedule References
July GCFR Forecast	\$20,306	July GCFR (M-1 Column E (line 2 minus line 16))
August GCFR Forecast	\$18,542	August GCFR (M-1 Column D (line 2 minus line 16))
Difference	\$1,764	July GCFR line minus August GCFR line

Figure 10 - North Calendar Sales (\$'000)

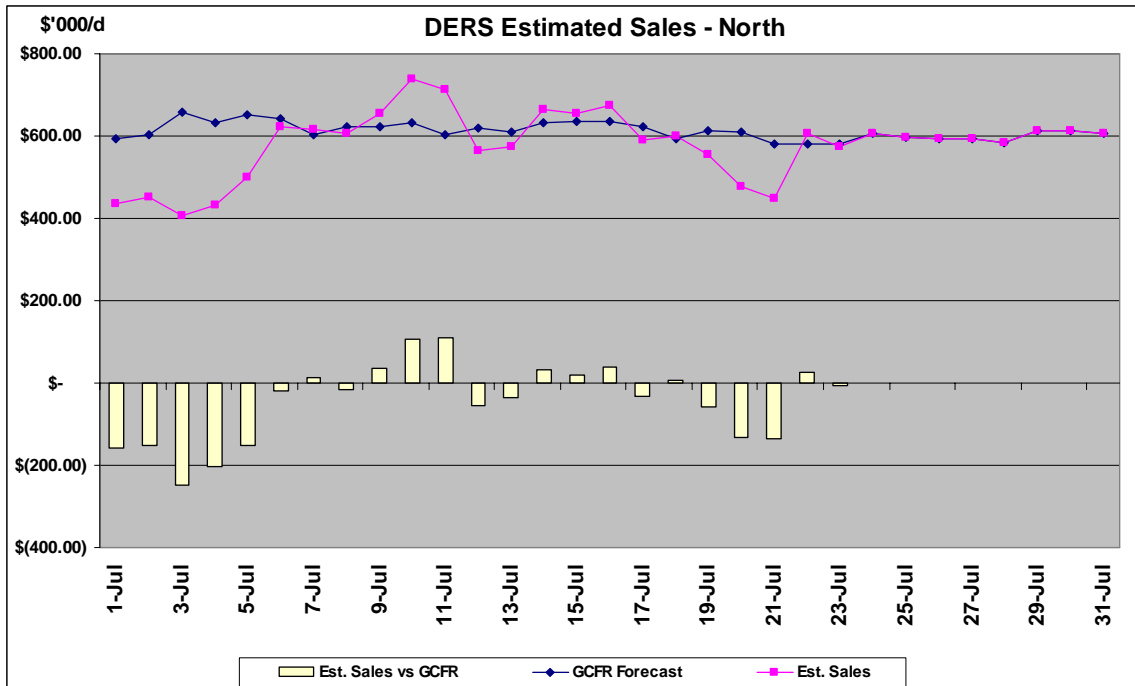


Table 9 –July Sales (\$'000)

July Sales Total (\$'000)		Schedule References
July GCFR Forecast	\$18,941	July GCFR (M-1 Column E (line 14))
August GCFR Forecast	\$22,763	August GCFR (M-1 Column D (line 14))
Difference	(\$3,822)	July GCFR line minus August GCFR line

The chart below shows the cost of gas and calendar sales for the month of July as reported in the July and August GCFR.

Table 10 – Variance in July and August GCFR for July Calendar Month Purchases and Sales (\$'000)

	July GCFR	August GCFR	Table References
July Sales	\$18,941	\$22,763	Table 9
July Purchases	\$20,306	\$18,542	Table 8
Difference	(\$1,365)	\$4,221	Sales minus Purchases

Note: The data shown in Figures 6 through 9 have been taken as of July 25th, and represents information available to DERS at the time. Numbers may be slightly off as a result of rounding differences.

Prior Period Adjustments

Sales (Schedule M-1 line 14)

DERS has included \$2,111,429 credit as a prior period adjustment relating to calendar sales. This prior period adjustment relates to billing adjustments (cancel/re-bills) for customer billings from the August 2006 through to April 2008 consumption period. Billing adjustments take the form of initial charges, revised charges and the time period in which the adjustment relates to as part of regular monthly reporting. The dollars and volumes for this adjustment are detailed by month below.

	North	
	\$	Volumes Gj
Prior to Aug-07	(\$59,922.42)	(8,713.51)
Aug-07	(\$3,952.86)	(686.55)
Sep-07	(\$4,458.06)	(976.55)
Oct-07	(\$14,786.81)	(2,888.10)
Nov-07	(\$15,556.31)	(2,854.86)
Dec-07	(\$21,572.27)	(3,410.07)
Jan-08	(\$666,923.56)	98.96
Feb-08	(\$551,261.76)	2,959.21
Mar-08	(\$428,139.52)	1,543.94
Apr-08	(\$344,855.91)	763.61
Total Prior Period	(\$2,111,429.47)	(14,163.92)

Carrying Costs on Imbalances (Schedule M-1 Column D, Line 5)

As per Decision 2006-030, DERS has included \$15,842.10 related to carrying costs on ATCO Gas' imbalance account.

Imbalances

DERS has included (\$189,083.50) in imbalances which were invoiced from ATCO Gas to DERS related to measurement adjustments from the December 2007 to April 2008 time period.